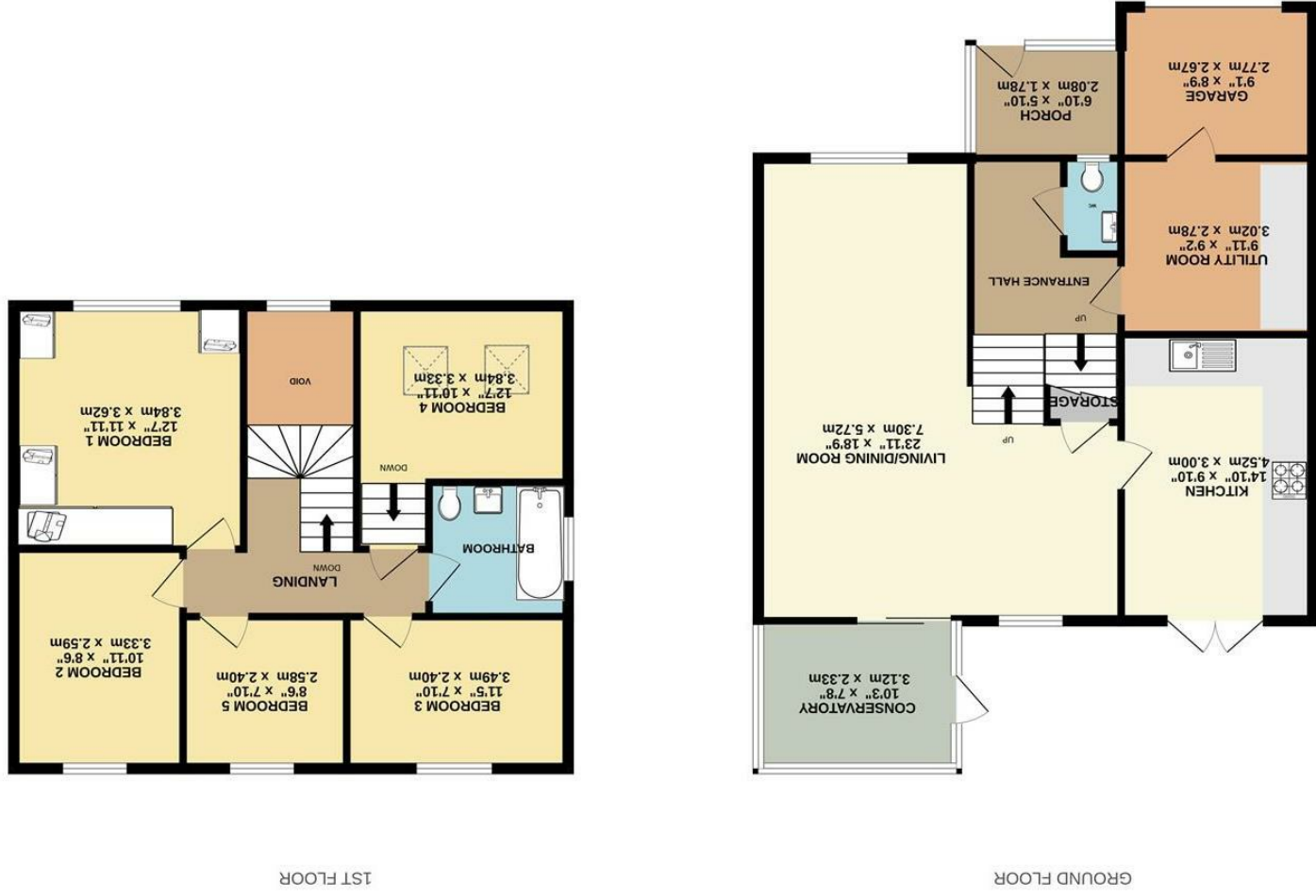


These particulars are believed to be accurate but they are not guaranteed and do not form a contract. Neither Jordan Fishwick nor the vendor or lessor accept any responsibility in respect of these particulars, which are not intended to be statements or representations of fact and any intending purchaser or lessee must satisfy himself by inspection or otherwise as to the correctness of each of the statements contained in these particulars. Any floorplans on this brochure are for illustrative purposes only and are not necessarily to scale.

Whilst every attempt has been made to ensure the accuracy of the floorplan contained here, measurements of doors, windows, rooms and any other items are approximate and no responsibility is taken for any error, omission or mis-statement. This plan is for illustrative purposes only and should be used as such by any prospective purchaser. The services, systems and appliances shown have not been tested and no guarantee as to their operability or efficiency can be given. Made with Metropix, ©2025



121 Chantry Road, Disley, SK12 2BE

£475,000



### The Property

Superbly positioned on this popular, established development in Disley Village and convenient for shops, school and railway station, a spacious, well appointed five bedroom detached family home. Beautiful, private garden with a backdrop over the village, driveway parking and an integral garage. Pvc double glazing, gas central heating and comprising: entrance hall, wc, open plan living/dining area, useful conservatory, breakfast kitchen, five generous first floor bedrooms and a family bathroom. If you're looking for a great family home that has been well looked after this is most definitely for you.



- Superb Detached Home
- Large Open Plan Ground Floor
- Beautifully Presented
- Lovely Rear Views
- Five Bedrooms
- Integral Garage
- Utility Room
- Popular and Convenient Location
- Raised Decking
- Off Road Parking

Postcode - SK12 2BE  
EPC Rating - C  
Local Authority - Cheshire East  
Council Tax - E

